

carbonbaseline

by boxfish

What you need to know



WHAT IS CARBONBASELINE?

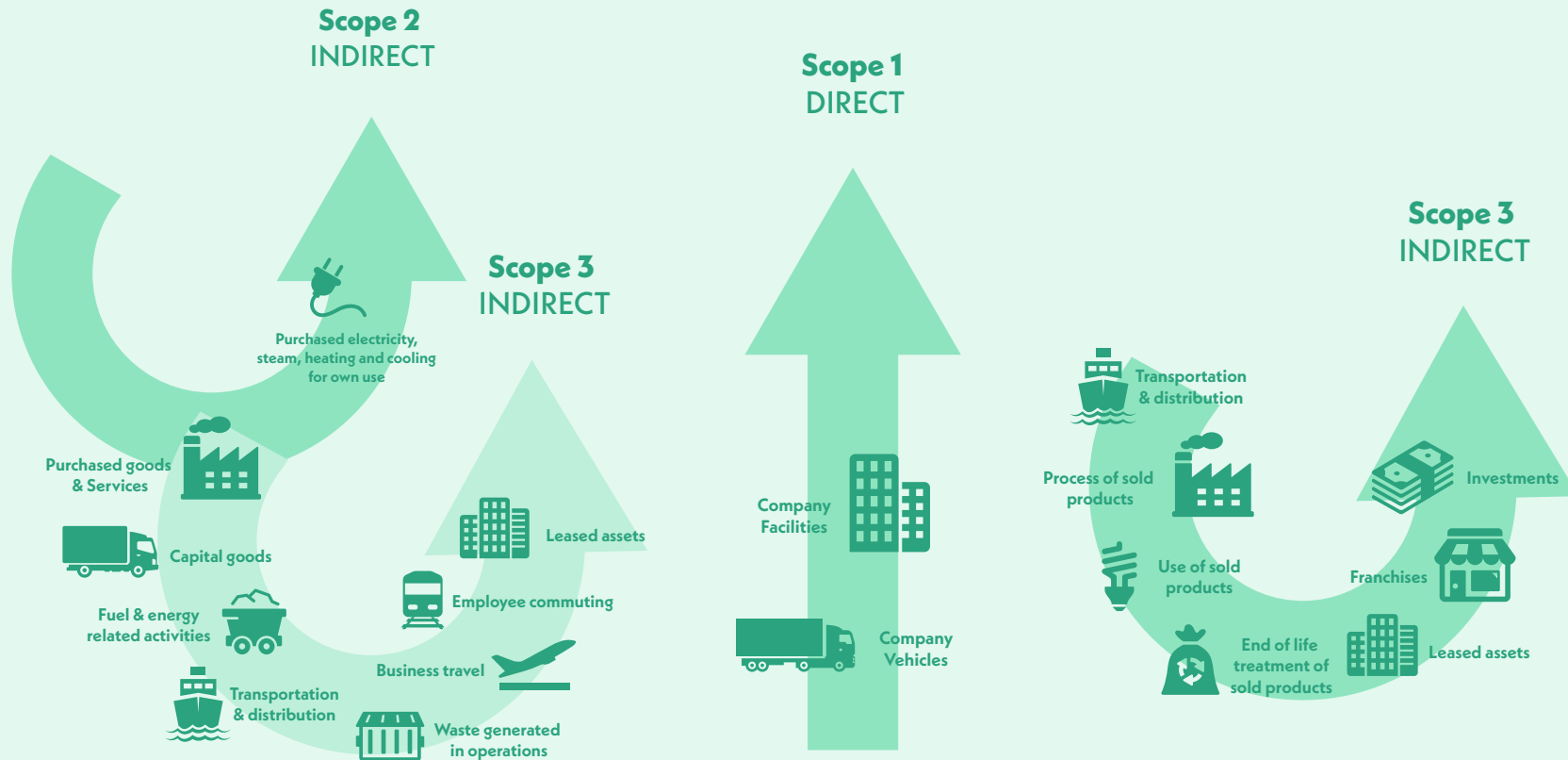
Carbonbaseline uses a similar methodology as the Streamlined Energy & Carbon Reporting framework to assist SMEs quantify and track their impact on the environment as well as set suitable milestone targets for making reductions.



WHAT DOES IT DO?

Carbonbaseline provides detailed analysis of your Scope 1 (direct) and Scope 2 (indirect) emission and where data is available, applicable Scope 3 emissions.

Once we've quantified your emissions, Carbonbaseline converts this data to carbon and calculates a suitable Intensity Metric which allows you to compare your impact against competitors and other sectors.

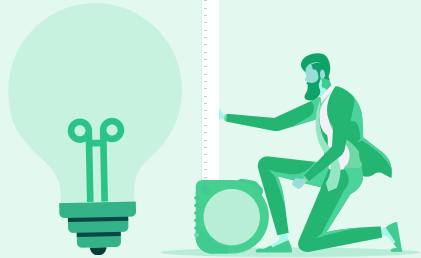


HOW CAN BOXFISH HELP?

With over a quarter of a century's experience consulting on utilities, Boxfish are ideally placed to help our clients with SECR compliance. We can:

1

Quantify your energy consumption and carbon emissions



2

Calculate suitable intensity metrics

3

Making recommendations on how to minimise carbon



GET IN TOUCH

Boxfish
Glasgow Head Office
Pavilion 3
Finnieston Business Park
Minerva Way
Glasgow, G3 8AU

Call us: **0141 226 8525**
Email us: **hello@weareboxfish.com**
Visit us: **weareboxfish.com**
Linkedin: **weareboxfish**

